



The Official Publication of the Georgia Club Calf Producers Association Est. 1997



GCCPA Field Day a great success!

The Georgia Club Calf Producers Association hosted its annual Field Day on June 10-11 in Calhoun, GA at the Northwest GA Livestock Pavilion. The event began with lots of fun contests. Exhibitors and adults competed in the Stockman's Quiz, Judging Contest, and the Coloring Contest. Thank you to 3-J Farms, Burt, Lynne and Jaren Jeffords, for hosting the judging contest. And to Lee Crump for organizing it. After a scrumptious BBQ dinner, sponsored by Purina Mills, the exhibitors competed in the Showmanship Showdown. There was some stiff competition in

all three divisions. Congratulations to the Champion Gibson Priest and Reserve Champion Austin Ertzberger. Saturday morning kicked off with the GCCPA membership meeting. New directors were elected. Congrats to Patrick Steed, Jason Johns, and Sid Arnold for being elected to 2-year terms. The heifer and steer shows were judged by Mr. Lydell Meier, who also sorted showmanship the night before. Congratulations to all the winners and a huge THANK YOU to the sponsors and silent auction donators and buyers!



President

Holly Alford

Vice President

Carolyn Gazda

Executive Secretary

Carole Knight

Board of Directors

Sondra Moser

Patrick Steed

Jason Thrasher

Lee Crump

Jason Johns

Sid Arnold

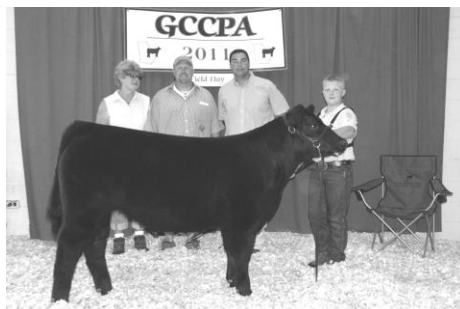
Find all the results from Field Day on the website!



Supreme Champ Heifer – Gibson Priest



Reserve Supreme Heifer – Wyatt Chandler



Champion Steer – Cal Pope



Reserve Champ Steer – Lori Edwards

Letter from GCCPA President.....

GCCPA had a great turn out at the 14th Annual Awards Ceremony. As we, the board of directors, were preparing to handout the awards, I stepped back and looked at the four tables. Just think about the time, energy and dedication that were put into those four tables of awards.

It all starts with looking and searching to find the right GCCPA calf. Then there is the homework: feeding, washing, blowing and daily care, often in rather in-climate weather. Not to mention entry forms, packing the trailer, preparing stalls at the shows, the early morning show days, pre show anticipation, the excitement of the show ring, repacking the trailer and the long sleepy ride home. A lot of work for a jacket...

This whole experience is not just about a jacket. It is about teaching young people about a sense of responsibility. The responsibility of taking care of a calf, the responsibility of being prepared for a show, along with the responsibility of keeping up with show results, and turning them in. Yes, it is a family/group effort to keep up with the information needed to turn a GCCPA point sheet, but I hope you can step back and see how rewarding the experience is for the exhibitor, their family and the GCCPA breeder.

As the awards were passed out, the exhibitors congratulated and pictures were made, I stepped back and looked at the four empty tables. Yes, it was a lot of work, a lot of time and a lot of responsibility; however, I hope everyone finds it as rewarding as I do to have been a part of the AWARDS.

Good Luck to all exhibitors and breeders this show season, and don't forget to keep up with your points!

Sincerely – Holly Alford

GCCPA bred calves excel at GA Junior Beef Futurity!

Congratulations to all the GCCPA exhibitors at the 2011 Georgia Junior Beef Futurity. GCCPA was well represented in the winners circle. Go to www.georgiaclubcalves.org to see the full results from Futurity.

GCCPA Website offers new Advertising Options

Beginning September 1, GCCPA will be selling banner ads on our webpage. The GCCPA website gets over 40,000 hits per month – those are potential customers for your farm or business. Only GCCPA members (active and/or associate) can advertise on our page. Ads will be sold on a first come – first serve basis. There are three different size ads that can be purchased weekly, monthly or for a whole year. Check the website next month for details or contact Carole for more information.



Top Ten British Heifer Division



Top Ten Other Breeds Heifer Division

2010-2011 GCCPA Awards

British Heifer Division

	Fname	Lname	Breeder	Points
1	Anna	Scott	MM Cattle Company	196
2	Taylor	Gazda	Gazda Cattle Company	112
3	Logan	Steed	P & M Farms	91
4	Thomas	Ross	K & M Shorthorns	74
5	Morgan	Fondren	Visionary Cattle	71
6	Maverick	Herod	Maverick Herod	65
7	Baylee	Steed	P & M Farms	58
8	Annalyn	Butler	A & A Cattle	56
8	Hunter	Wilson	MM Cattle Company	56
10	Madison Rae	Miller	Triple M Angus	53
11	Case	Wilson	JWR Land & Cattle	47
11	Peyton	Mattox	2TK Farms (Boatman)	47
13	Sam	Herring	A & A Cattle	46
14	Callie	Akins	Partisover Ranch	45
15	Gabe	Brogdon	B4F	42
16	Taylor	Wheless	Davis Farms	41
17	Morgan	Fondren	Visionary Cattle	37
17	Rae	Evans	K & M Shorthorns	37
17	Landon	Vest	Shady River Farms	37
17	Austin	Barnes	MM Cattle Company	37
21	Landon	Herring	Sandbriar Farms	36
21	Reese	Ventura	K & M Shorthorns	36
21	Brady W.	Gentry	Brady W. Gentry	36
24	Tom	Morgan	Thrasher Cattle Company	35
25	Taylor	Wheless	Davis Farms	34
26	Robbie	Arnold	Triple M Angus	32
27	Morgan	Fondren	Sandbriar Farms	30
28	Seth	Robinson	Mead Cattle Enterprises	29
29	Brady W.	Gentry	Gibson's Farm	28
30	Kayley	Edwards	Triple C Shorthorn	26
31	Kelsey	Waters	Parisover Ranch	25
32	Abbey	Cook	P & M Farms	23
33	Mason	Herod	All Hours Farms	22
34	Noah	Coombs	Triple C Shorthorn	21
35	Christopher	Ramey	Mead Cattle Enterprises	20
36	Rebekah	Ramey	Mead Cattle Enterprises	16
36	Jennifer	Mitcham	K & M Shorthorns	16
38	Sam	Herring	A & A Cattle	14
39	Anna	Scott	MM Cattle Company	13
40	Seth	Robinson	Mead Cattle Enterprises	12
40	Cole	Brogdon	Mead Cattle Enterprises	12
42	Bailee	Boling	CABE.	9
42	Abbey	Cook	P & M Farms	9
44	Gracie	Claxton	A & A Cattle	6

Other Breeds Heifer Division

Placing	Fname	Lname	Breeder	Points
1	Kayla	Edwards	3J Farms	151
2	Gibson	Priest	Gibson's Farm	95
3	Gibson	Priest	Moser Cattle Company	93
4	Will	Bius	Partisover Ranch	89
5	Holly	Smith	Moser Cattle Company	79
6	Morgan	Tolbert	Chi-G Farms	74
7	Alex	Rowell	A & A Cattle	66
8	Chancey	Phillips	Pleasant Acres Farm	54
9	Michael	Patterson	Carey Farms	53
10	Makayla	Holmes	3-J Farms	49
10	Ashlyn	Payne	Hart Farms	49
12	Kelsey	Waters	Partisover Ranch	47
13	Cal	Pope	allaway Cattle Compan	44
14	Taylor	Gazda	Gazda Cattle Company	41
14	Katie	Mealor	Hart Farms	41
16	Michael	Loughridge	Partisover Ranch	37
17	Landon	Vest	Shady River Farms	33
18	Claire	Woodard	Lacoda Farms	31
19	Candace	Barnes	J & J Cattle	28
20	Merritt	Daniels	J. Harris Morgan Farm	26
21	Landon	Vest	Shady River Farms	25
22	Caroline	Waters	Parisover Ranch	23
23	Macy	Seagraves	Lacoda Farms	21
24	Michael	Loughridge	Partisover Ranch	20
25	Kandice	Hooper	Hilltop Farms	18
25	Jessie	Mattox	Wolfcreek Farms	18
27	Peyton	Mattox	Talmo Ranch	16
28	Will	Woodard	Lacoda Farms	14
29	Faith	Turk	Carey Farms	8
30	Taylor	Gazda	Gazda Cattle Company	8



Top Ten Commercial Heifer Division

Commercial Heifers Division

Placing	Fname	Lname	Breeder	Points
1	Wyatt	Chandler	RSE Farms	141
2	JuliAnn	Williams	Darby Club Calves	138
3	Adam	Klingler	Moser Cattle Co	133
4	Faith	Turk	4TF (Turk Farms)	76
4	Adam	Floyd	CABE.	76
6	Brady W.	Gentry	Gibson's Farm	73
7	Brett	Dyer	CABE.	63
8	Brooke	Smith	Moss Oak Farms	62
9	Lori	Edwards	Edwards Club Calves	61
10	Austin	Floyd	Crump Club Calves	56
11	Heidi	Seagraves	Lacoda Farms	55
12	Hunter	Wilson	Callaway Cattle Co	52
13	Holly	Smith	Anton Angus Farm	48
14	Makayla	Holmes	Holmes Club Calves	46
14	Luke	Roberts	Rollin T Farm	46
15	Brandon	Boling	GA FFA Center	45
16	Caleb	Studstill	Callaway Cattle Co	41
17	Luke	Southern	Triple M Angus	38
18	Adam	Floyd	Chi-G	36
19	Jenna	Lawson	Elliott Farms	35
20	Courson	Hutshinson	A & A Cattle	34
21	Lacy	Powell	Talton Farms	31
22	Ryan	Harcrow	Ridgewood Farms	29
23	Tate	Knight	Holmes Club Calves	24
23	Austin	Barnes	GA FFA Center	24
25	Adam	Tawzer	CABE.	22
26	Austin	Barnes	GA FFA Center	21
27	Bailie	Sumner	Darby Club Calves	19
28	Sarah	Robinson	Moser Cattle Co	18
28	Sunni	Mays	Moss Oak Farms	18
28	Ryan	Harcrow	3J Farms	18
31	Brett	Dyer	NV Cattle	13
32	Mckenzie	Powell	Brown Farms	11
33	Logan	Edwards	Dyer Livestock	10
34	Danielle	Miller	Hidden Acres	7
34	Joshua	McLeroy	Kennedy Farms	7
36	Case	Wilson	Callaway Cattle Co	5

Steer Division

Placing	Fname	Lname	Breeder	Points
1	Wyatt	Chandler	RSE Farms	185
2	Sydney	Arnold	Oleo Ranch	151
2 1/2	Leanna	Roberts	Darby Club Calves	127
3	Gibson	Priest	Bowman Club Calves	96
4	Taylor	Gazda	Shirley Show Cattle	94
5	Brett	Dyer	Davis Show Cattle	94
6	Brett	Dyer	J & J Cattle	84
7	Alex	Rowell	A & A Cattle	79
8	Tom	Morgan	Thrasher Cattle Company	72
9	Bailee	Boling	CABE.	66
10	Anna	Scott	RSE Farms	62
11	Candace	Barnes	J & J Cattle	59
12	Cody	Corbett	Corbett Farms	58
13	Levi	Southern	NV Cattle	57
14	Cole	Pendergas	Brown Farms	56
15	Gabe	Brogdon	Mead Cattle Enterprises	55
16	Gage	Nichols	Cypress Creek Farm	53
17	Annalyn	Butler	A & A Cattle	52
18	Landon	Herring	A & A Cattle	49
19	Ben	Duncan	Callaway Cattle Company	48
20	Matthew	Beville	CABE.	46
21	Michael	Patterson	4TF (Turk Farms)	43
22	Tate	Knight	3-J Farms	42
22	Bailie	Sumner	Meeks Farms	42
22	Cole	Pendergas	Brown Farms	42
25	Sarah	Robinson	JWR Land & Cattle	37
25	John	Beville	Callaway Cattle Company	37
25	Mckenzie	Powell	Talton Farms	37
28	Brett	Boling	GA FFA Center	36
28	Randi	Rouse	Thrasher Cattle Company	36
30	Sunni	Mays	Moss Oak Farms	34
30	Erin	Jones	JT Sumner	34
32	Deanna	Clay	A & A Cattle	33
32	Tyler	Arnold	Pleasant Acres Farm	33
34	John Dean	Daniels	Lamberth Farms	32
35	Stephanie	Hilburn	Rollin T Farm	31
35	Sawyer	Lane	Dirt Road Farms	31
37	Sawyer	Lane	J & J Cattle	30
38	Trevor	Brown	Chi- G Farms	29
39	Lacy	Powell	Talton Farms	27
40	Morgan	South	Rollin T Farm	26
40	Kayla	Beville	CABE.	26
42	Tanner	Braham	Visionary Cattle	25
43	Drew	Williams	Turnpike Creek Farms	24
44	Allison	Dorsey	Wiregrass Cattle Co	23
44	Jake	Duncan	Mel-Joy Ranch	23
46	Cole	Dorsey	Davis Farms Show Cattle	22
47	Maverick	Herod	Rollin T Farm	21
47	Bailey	Churchwell	Visionary Cattle	21
47	Jessie	Quinones	Visionary Cattle	21
50	Katie	Mays	Moss Oak Farms	20
50	Luke	Roberts	Chi- G Farms	20

Steer Division Cont.

51	Trevor	Brown	Chi- G Farms	16
51	Colby	Ellis	Sandbriar Farms	16
51	Jake	Duncan	Callaway Cattle Company	16
54	Joshua	McLeroy	Kennedy Farms	15
55	Jenna	Lawson	K & M Shorthorns	14
55	Kasi	Byrd	Visionary Cattle	14
57	Anna	Scott	Davis Farms Show Cattle	12
58	Holly	Smith	Anton Angus Farm	11
59	Danielle	Miller	Pine Ridge Farms	10
60	Ben	Duncan	Mel-Joy Ranch	9
61	Caleb	Garner	K & M Shorthorns	8
61	Tori	Klingler	B and B Farms	8
63	Conner	Ellis	Smith Brothers Farms	4
64	Makayla	Holmes	Holmes Club Calves	1

	Breeder	Point Sheets	Points
1	A & A Cattle	10	435
2	RSE Farms	3	388
3	Moser Cattle Co	4	323
4	CABE.	7	308
5	MM Cattle Company	4	302
6	Parisover Ranch	7	286
7	3J Farms	4	260
8	Darby Club Calves	2	284
9	Callaway Cattle Co	7	243
10	J & J Cattle	4	201
11	Gibson's Farm	3	196
12	Visionary Cattle	6	189
13	K & M Shorthorns	5	186
14	P & M Farms	4	181
15	Gazda Cattle Company	3	161
16	Chi- G Farms	4	155
17	Oleo Ranch	1	151
18	Mead Cattle Enterprises	6	144
19	Thrasher Cattle Company	3	143
20	Moss Oak Farms	4	134
21	Davis Farms Show Cattle	3	128
22	GA FFA Center	4	126
23	Triple M Angus	3	123
24	4TF (Turk Farms)	2	119
25	Brown Farms	3	109
26	Lacoda Farms	4	100

27	Bowman Club Calves	1	96
28	Shady River Farms	3	95
28	Talton Farms	3	95
30	Shirley Show Cattle	1	94
31	Hart Farms	2	90
32	Pleasant Acres Farm	2	87
33	JWR Land & Cattle	2	84
34	Sandbriar Farms	3	82
35	Rollin T Farm	3	78
36	Davis Farms	2	75
37	Holmes Club Calves	3	71
38	NV Cattle	2	70
39	Maverick Herod	1	65
40	Carey Farms	2	61
40	Edwards Club Calves	1	61
42	Anton Angus Farm	2	59
43	Corbett Farms	1	58
44	Crump Club Calves	1	56
45	Cypress Creek Farm	1	53
46	2TK Farms (Boatman)	1	47
46	Triple C Shorthorn	2	47
48	B4F	1	42
48	Meeks Farms	1	42
50	Brady W. Gentry	1	36
51	Elliott Farms	1	35
52	JT Sumner	1	34
53	Lamberth Farms	1	32
53	Mel-Joy Ranch	2	32
55	Dirt Road Farms	1	31
56	Ridgewood Farms	1	29
57	J. Harris Morgan Farm	1	26
58	Turnpike Creek Farms	1	24
59	Wiregrass Cattle Co	1	23
60	All Hours Farms	1	22
60	Kennedy Farms	2	22
62	Hilltop Farms	1	18
62	Wolfcreek Farms	1	18
64	Talmo Ranch	1	16
65	Dyer Livestock	1	10
65	Pine Ridge Farms	1	10
67	B and B Farms	1	8
68	Hidden Acres	1	7
69	Smith Brothers Farms	1	4

**Georgia Club Calf
Producers Association**

P.O. Box 8112, GSU
Statesboro, GA 30460

PHONE:
912-690-1727

FAX:
912-681-0376

E-MAIL:
CLH@UGA.EDU

We're on the Web!

See us at:

www.georgiaclubcalves.org



Top Ten Steer Division



**Premiere Breeder
A&A Cattle**



**Platinum Breeder
RSE Farms**

GCCPA
C/O CAROLE KNIGHT
P.O. BOX 8112, GSU
STATESBORO, GA 30460

